

TABLE OF CONTENTS

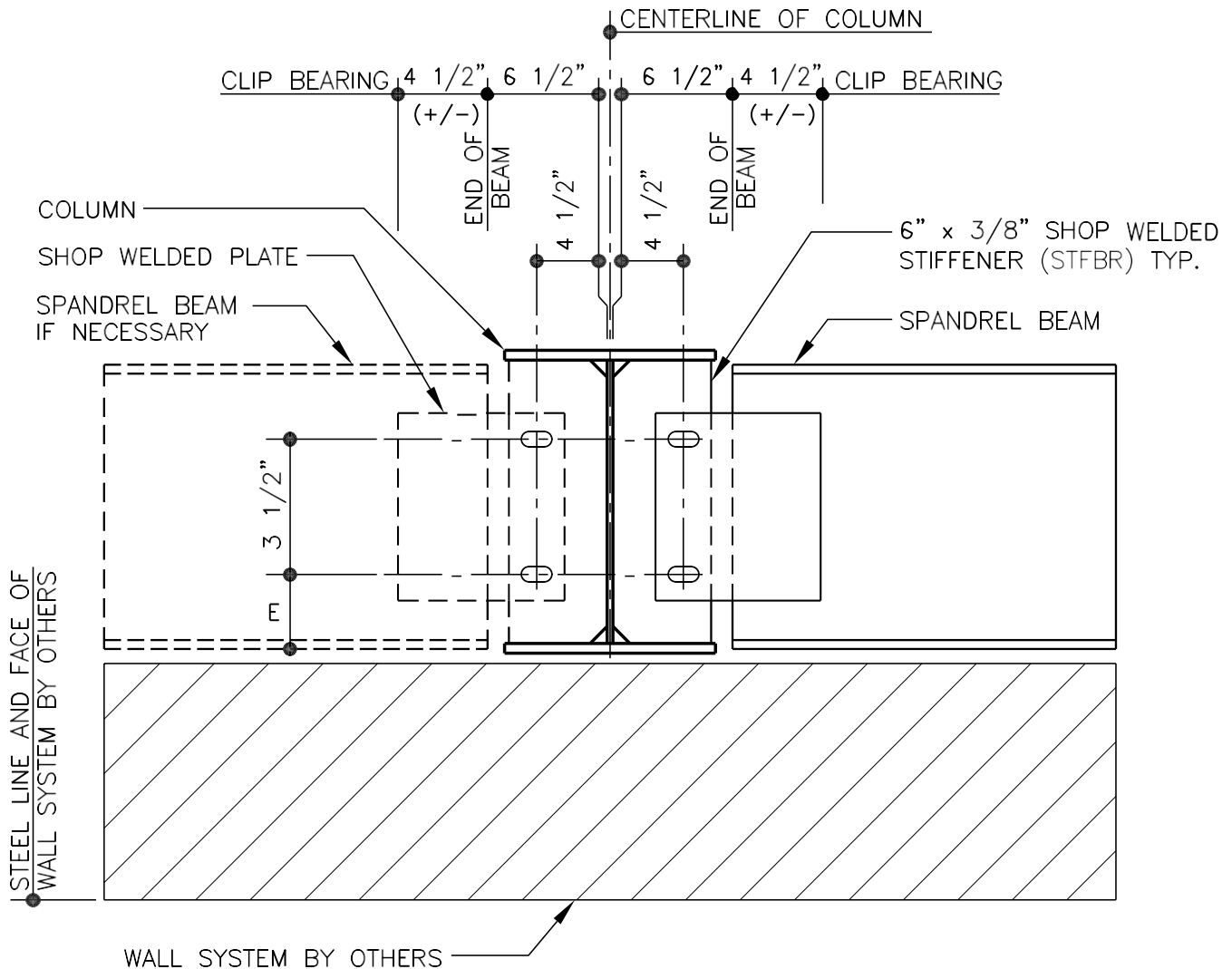
Spandrel Beam Details..... 2
 CO0030 – SW/EW Double Beam..... 2
 CO0050 – EW Beam to RF Tapered Column 3
 CO0070 – SW Beam to RF Column..... 4
 CO0130 – SW & EW Beams to P & B Column 5

Refer to Section 4.9 for Tilt-Up / Pre-Cast Wall Details

Refer to Section 4.10 for Non-Load Bearing Masonry Wall Details

SPANDREL BEAM DETAILS

CO0030 – SW/EW DOUBLE BEAM



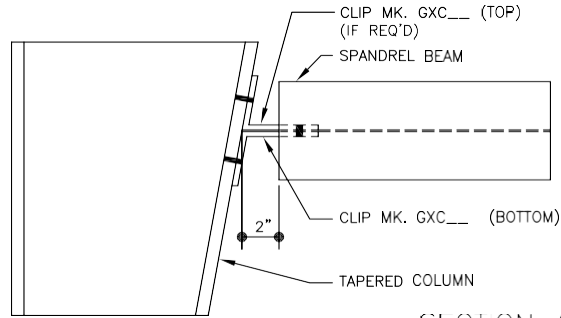
SPANDREL BEAM CONNECTION

AT FRAME COLUMN

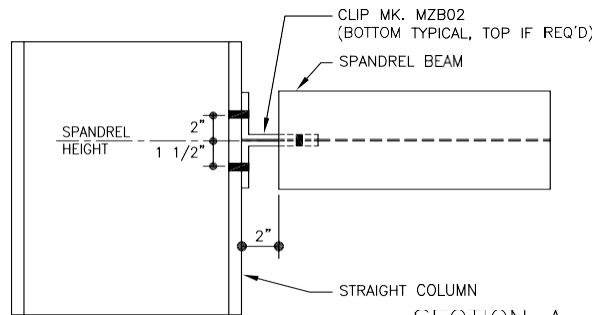
USE (4) C " ϕ x D " A325 BOLTS AND NUTS
REFERENCE REFECTOR NOTE FOR TYPICAL WASHER REQUIREMENTS

CO0030

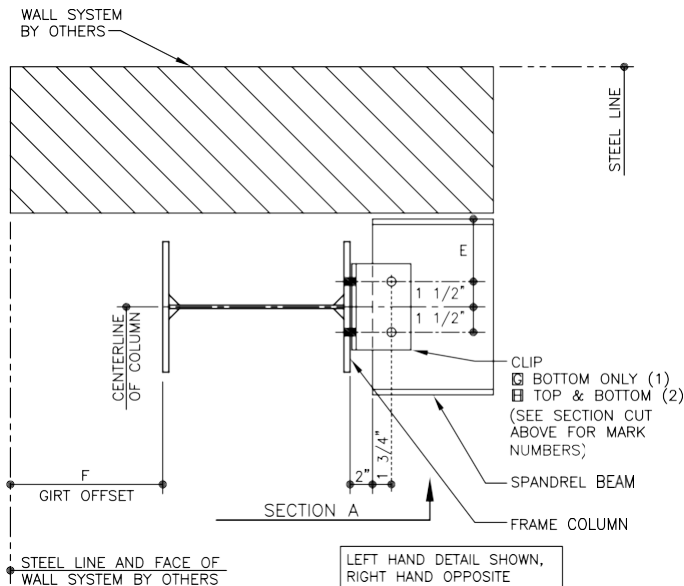
CO0050 – EW BEAM TO RF TAPERED COLUMN



SECTION A
AT TAPERED COLUMNS



SECTION A
AT STRAIGHT COLUMNS

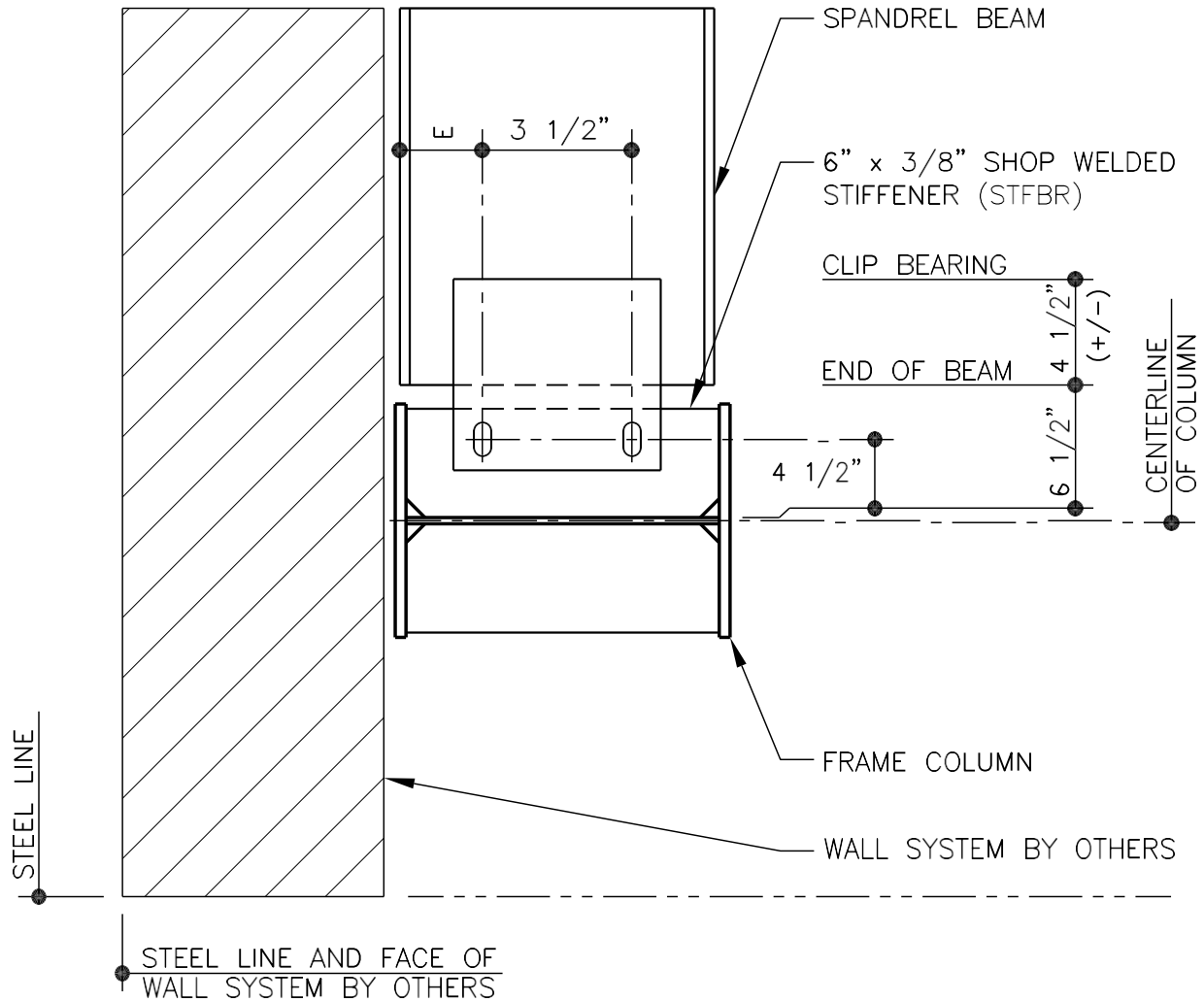


SPANDREL BEAM CONNECTION

USE 3/4" ϕ x 3" A325 BOLTS AND NUTS
REFERENCE ERECTOR NOTE FOR TYPICAL WASHER REQUIREMENTS

CO0050

CO0070 – SW BEAM TO RF COLUMN

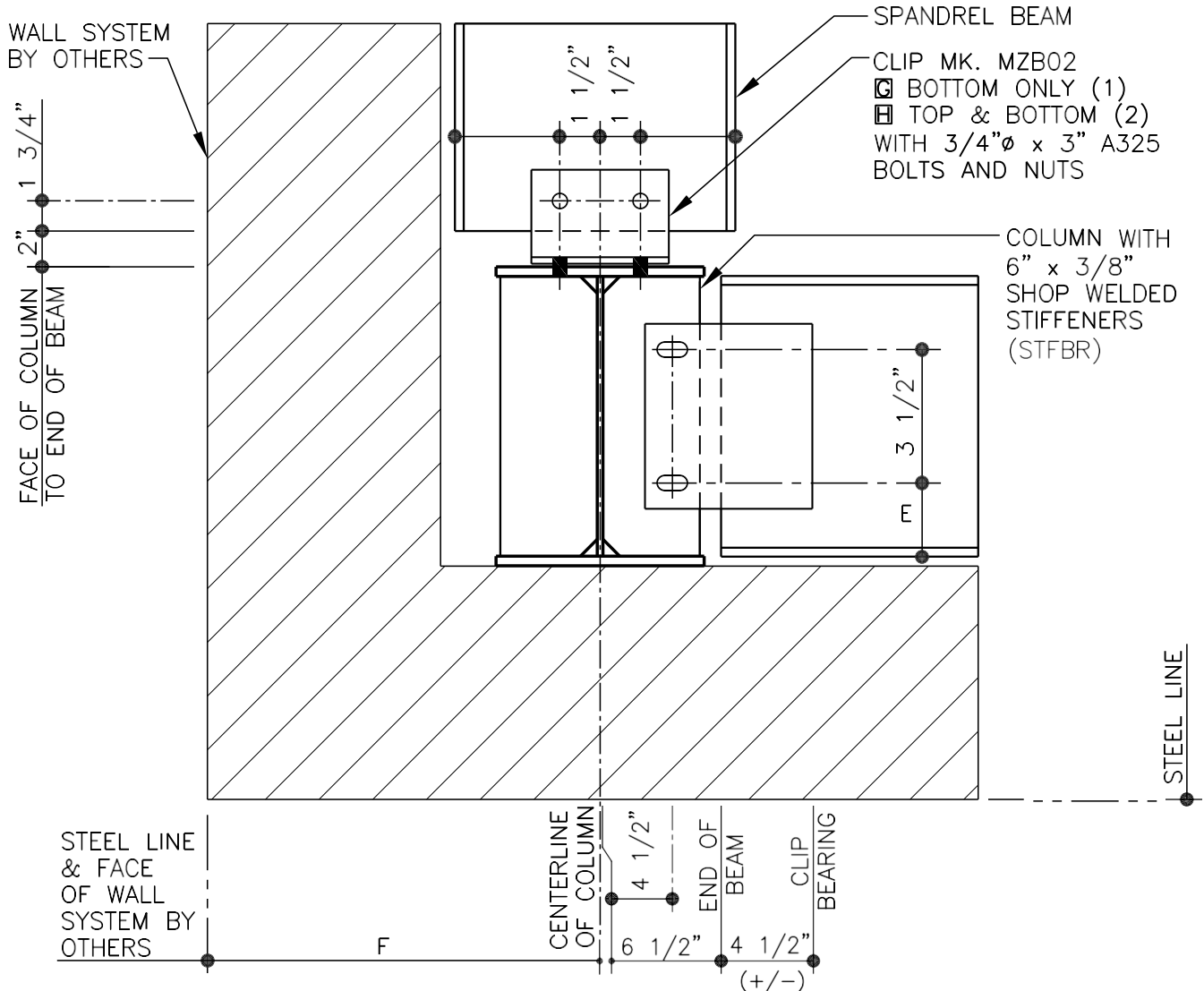


SPANDREL BEAM CONNECTION

USE (2) C " ϕ x D " A325 BOLTS AND NUTS
REFERENCE ERECTOR NOTE FOR TYPICAL WASHER REQUIREMENTS

CO0070

CO0130 – SW & EW BEAMS TO P & B COLUMN



SPANDREL BEAM CONNECTION

AT CORNER

USE (2) C " ϕ x D " A325 BOLTS AND NUTS

REFERENCE ERECTOR NOTE FOR TYPICAL WASHER REQUIREMENTS

CO0130